








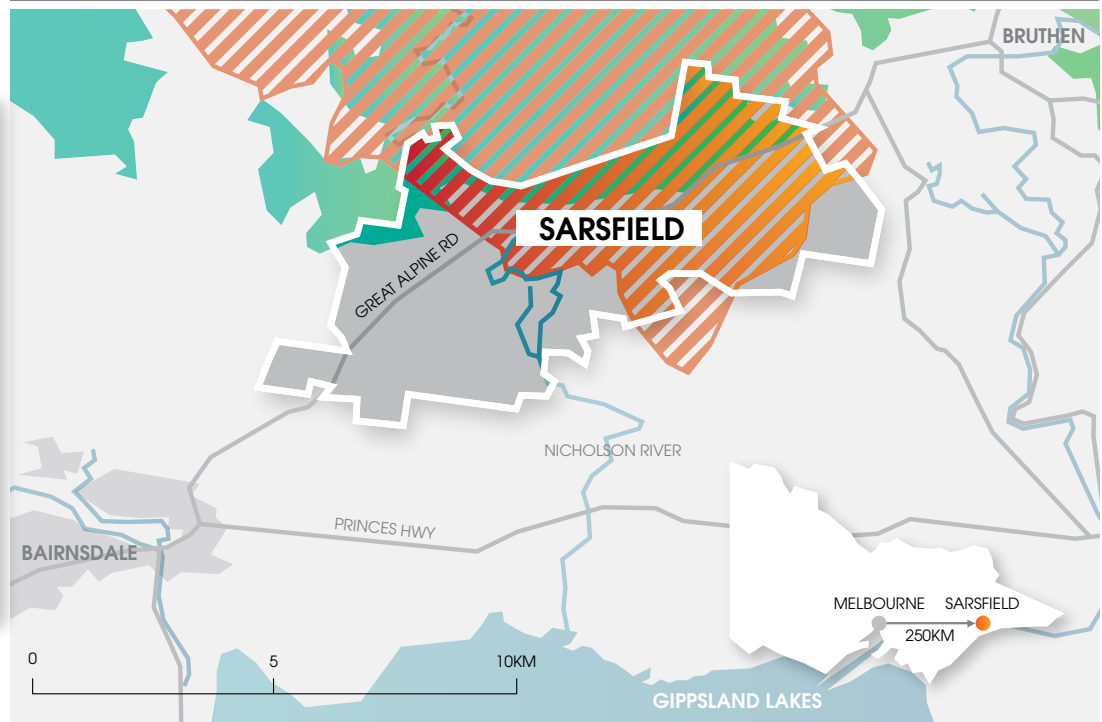
# SARSFIELD 2030



## OUR VISION

In Sarsfield we value each other, our beautiful and peaceful surroundings, our lifestyles and our diverse heritage. We will be a strong, cohesive and welcoming community where everyone belongs.

-  SARSFIELD BOUNDARY
-  2019/2020 BUSHFIRE
-  WATERBODY
-  CLEARED/MANAGED LAND
-  FOREST
-  ROAD



## HOW DID WE DECIDE ON OUR PRIORITIES?

The Sarsfield Community Association (SCA), formed since the fires, has been in constant contact with the community.

Over a period of several months SCA conducted surveys and conversations inviting residents, community group representatives, and business owners to consider the future of our community and identify initiatives and projects that would assist us all to achieve our vision.



42

INTERVIEWS



38

MEETINGS/  
WORKSHOPS



254

SURVEYS



334

INDIVIDUAL &  
GROUP ENGAGEMENTS



## OUR COMMUNITY

Our community of Sarsfield is a small rural district in the East Gippsland Shire of Victoria with its centre located approximately a 15 minute drive (14km) north east from Bairnsdale along the Great Alpine Road. To the population of around 620 residents it's a lot more than somewhere you drive to on the way to somewhere else, it's where we live.

In 2019-20, the Black Summer Bushfire devastated Sarsfield destroying 80 residential homes, damaging over 100 more and burning almost half of the land area. As a community, we're faced with an uncertain future but we've chosen to take that future in our own hands. Not just to put things right after the fires but to actively shape where we're going and how we're going to get there.

Sarsfield 2030 captures the voice and vision of our community and expresses the things we need to do to bring about our vision. In particular, we have identified seven goals that will focus our vision.

The diagram describes these interconnected goals

*Sarsfield Community Association acknowledges the Gunaikurnai people as the Traditional Custodians of the land that encompasses Sarsfield. We pay our respects to all Aboriginal and Torres Strait Islander people living in East Gippsland, and their Elders past and present.*