








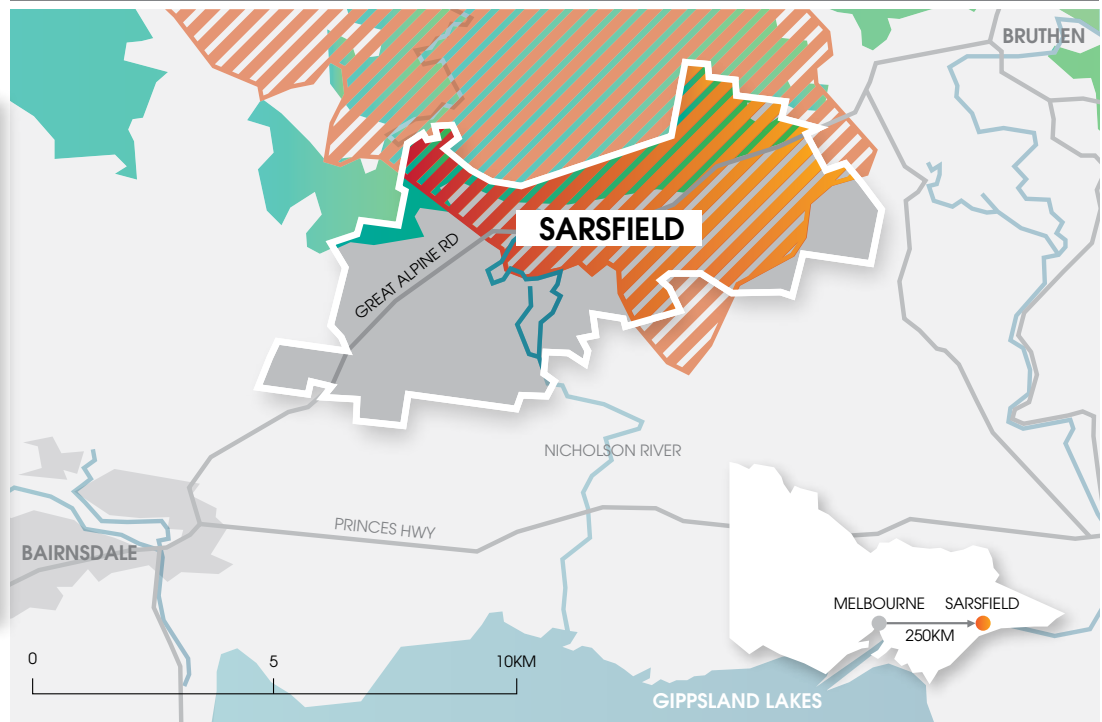
SARSFIELD 2030



OUR VISION

In Sarsfield we value each other, our beautiful and peaceful surroundings, our lifestyles and our diverse heritage. We will be a strong, cohesive and welcoming community where everyone belongs.

-  SARSFIELD BOUNDARY
-  2019/2020 BUSHFIRE
-  WATERBODY
-  CLEARED/MANAGED LAND
-  FOREST
-  ROAD



HOW DID WE DECIDE ON OUR PRIORITIES?

The Sarsfield Community Association (SCA), formed since the fires, has been in constant contact with the community.

Over a period of several months SCA conducted surveys and conversations inviting residents, community group representatives, and business owners to consider the future of our community and identify initiatives and projects that would assist us all to achieve our vision.



42

INTERVIEWS



38

MEETINGS/
WORKSHOPS



254

SURVEYS



334

INDIVIDUAL &
GROUP ENGAGEMENTS



OUR COMMUNITY

Our community of Sarsfield is a small rural district in the East Gippsland Shire of Victoria with its centre located approximately a 15 minute drive (14km) north east from Bairnsdale along the Great Alpine Road. To the population of around 620 residents it's a lot more than somewhere you drive to on the way to somewhere else, it's where we live.

In 2019-20, the Black Summer Bushfire devastated Sarsfield destroying 80 residential homes, damaging over 100 more and burning almost half of the land area. As a community, we're faced with an uncertain future but we've chosen to take that future in our own hands. Not just to put things right after the fires but to actively shape where we're going and how we're going to get there.

Sarsfield 2030 captures the voice and vision of our community and expresses the things we need to do to bring about our vision. In particular, we have identified seven goals that will focus our vision.

The diagram describes these interconnected goals

Sarsfield Community Association acknowledges the Gunaikurnai people as the Traditional Custodians of the land that encompasses Sarsfield. We pay our respects to all Aboriginal and Torres Strait Islander people living in East Gippsland, and their Elders past and present.

OUR GOALS

1



REALISING
OUR
POTENTIAL

Acknowledging, understanding and building awareness of Sarsfield's aboriginal heritage

Honouring and preserving Sarsfield's non-indigenous history and heritage



RESPECTING
OUR PAST

Organising community events and activities

Working with the local aboriginal community

Developing a community communication plan



BRINGING PEOPLE TOGETHER

Developing a central space to get together

Improving access to our natural assets for recreation and leisure

Caring for the natural environment of Sarsfield



DEVELOPING
OUR SPACES

improving physical and mental health and aiding recovery from the bushfires

Building our readiness for disasters and our capacity for recovery

Developing a road safety action plan

Relocating the country fire brigade and fire station



KEEPING OUR
COMMUNITY SAFE
AND WELL

Making Sarsfield a distinct and identifiable place

Establishing Sarsfield sporting teams and interest groups



FOSTERING OUR
SENSE OF PLACE
AND BELONGING

Building the business skills of local makers, producers and traders

Establishing a local makers, producers and traders network

Showcasing the products of local makers, producers and traders

Developing the economy and our prosperity



BUILDING OUR
PROSPERITY AND
SUPPORT FOR
LOCAL ENTERPRISE

Engaging community members in planning and decision making processes

Getting the right people in the right roles

Building skills and fostering leadership, including among our young people

Securing funding and resources



SARSFIELD 2030 HAS ALREADY BEGUN!

Some Sarsfield 2030 projects are already well underway.

We have run many community events like Friday Feeds to bring us together and have advanced the Master Plan for the Hall and Reserve which will redevelop a very important space for our community.

As we go forward, Sarsfield 2030 will provide us with a blueprint to make sure we keep an eye on important priorities for our community. We'll pursue our current priorities and projects and draw on ideas from our community to respond to other needs and opportunities as they emerge.

We understand that our vision is expansive and our goals are large. We'll need time, resources and the help of project partners like federal, state and local government and other benefactors, to get things done.

We've already sought funding for some of our priorities and as time and opportunities allow, we imagine that small and large contributions from a mix of sources will combine to make Sarsfield 2030 a reality.

WANT TO KNOW MORE?

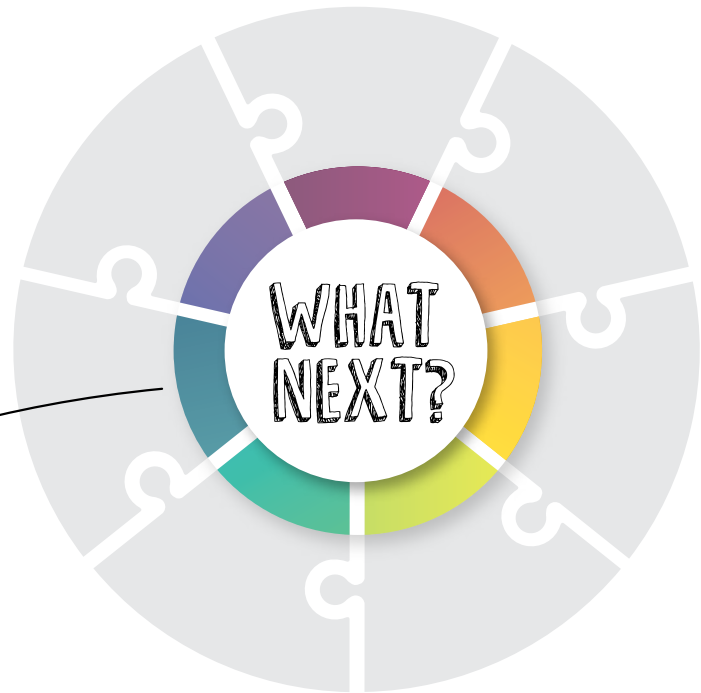
Sarsfield 2030 provides opportunities for the community to participate in events and activities. Every effort will be made to let you know the details about what is on and hopefully you can come along and bring your family and friends.

If you want to know more about Sarsfield 2030, any of the projects or about upcoming events please:

- ✓ visit our website at sarsfield.com.au
- ✓ scan the QR code – or any of the ones you'll see around Sarsfield with our logo
- ✓ or join us on facebook.



SCAN
THIS CODE



GET INVOLVED IN SARSFIELD 2030!

Come to events and bring your friends.

If you are interested in contributing to any of the Sarsfield 2030 projects with ideas or time to help make them happen, we would love to hear from you.

Your support, energy and expertise will always be welcome and appreciated.

CONTACT

Simon Hof

president@sarsfield.com.au
0472 838 149

Cath McLellan

committee3@sarsfield.com.au
0488 051 936

www.sarsfield.com.au
info@sarsfield.com.au

